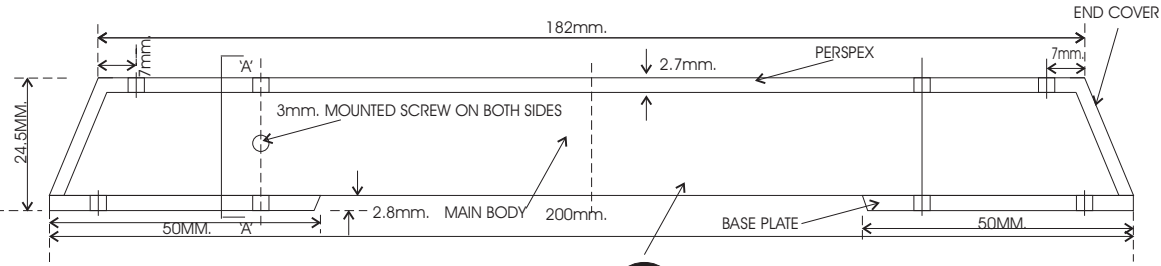
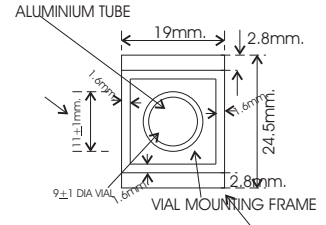


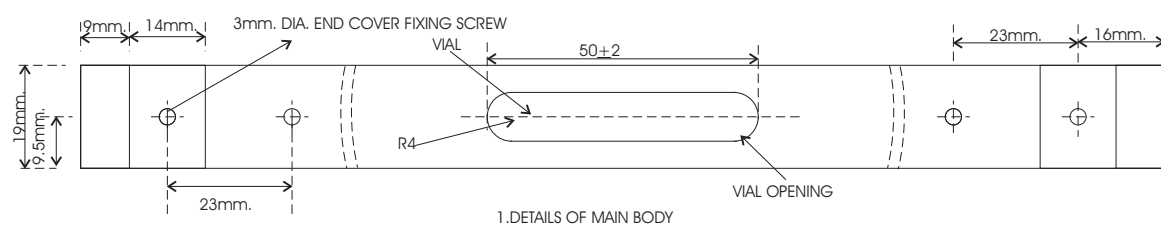
## SPIRIT LEVEL-SL-2



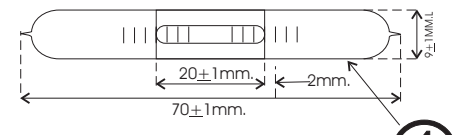
①



⑤

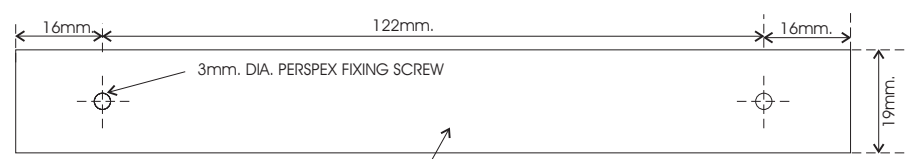


1. DETAILS OF MAIN BODY



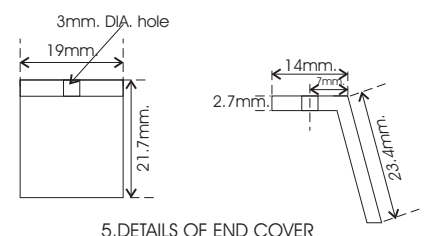
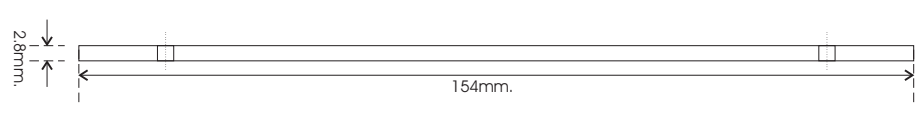
④

3. DETAILS OF BUBBLE TUBE

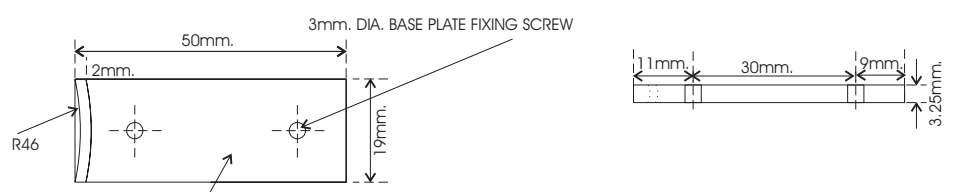


②

2. DETAIL OF PERSPEX PLATE



5. DETAILS OF END COVER



③

3. DETAILS OF BASE PLATE

- NOTE:**
1. All dimensions are in mm.
  2. This design is suitable for use in Gauge Cum Level Box Type [B.G.]
  3. Each level shall be supplied in a suitable protective wooden case or box.
  4. The Sensitivity range for 2mm. run of the air bell in bubble tube shall be 0'-2'-30".

5	End Cover	2.	Plastic	As per RDSO Specn.no SM/36 [for Spirit level-Box type]
4	Bubble Tube	1.	Glass	-----Do-----
3	Base Plate	2.	Brass	-----Do-----
2	Perspex Plate	1.	Perspex	-----Do-----
1	Main Body	1.	Alum.	-----Do-----
Ref no.	Description	No./Unit	Material	Spec.
Lakshmi Industrial Corporation	Drg. No : LIC/ Spirit Level /153			